

ISLAND SCIENTIFIC LTD

Reply to:

Unit 9
Ventnor Industrial Estate
Station Road
Ventnor
Isle of Wight
PO38 1DX
England

Tel No: (0) 1983 855822

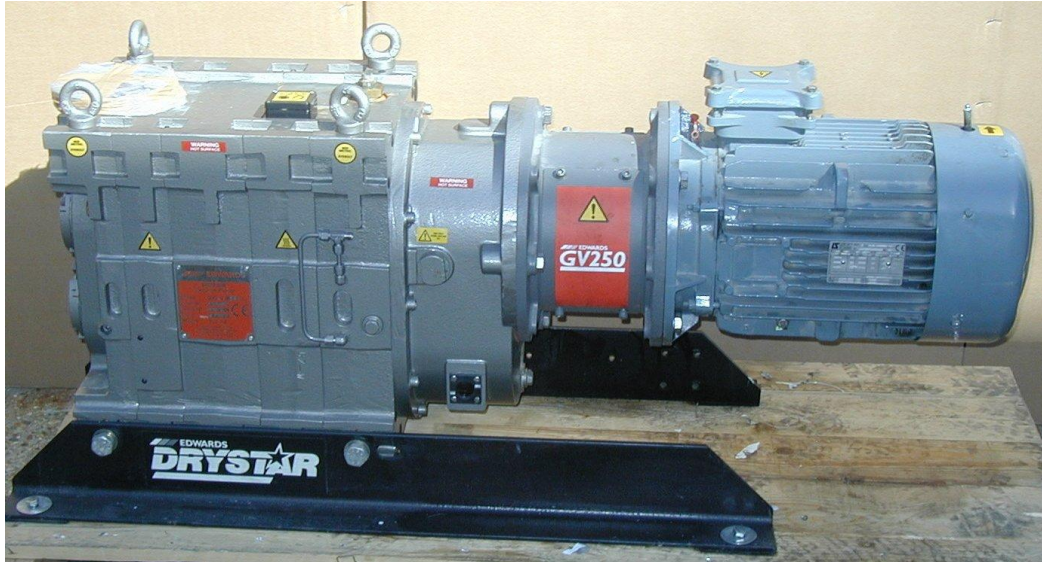
Fax No: (0) 1983 852146

E-Mail Address: sales@island-scientific.co.uk

Web Site: <http://www.island-scientific.co.uk>



*Vacuum Equipment, Used and Reconditioned for Technology,
Industry, Research and Education*



Make: Edwards

Model: GV250

Pumping speed: 341CMH

Ultimate Vacuum: .4 m/bar

Inlet flange: ISO100

Outlet flange: ISO63

Cooling: Water

Voltage: 415V

Motor Power: 11Kw

Overall Dimensions: 1432 mm long x 581 mm high x 662 mm wide

Weight: 750 Kg

Condition: Reconditioned

Accessories Available: Exhaust Filter